

Zeitschrift für
Gemeinwirtschaft
und Gemeinwohl

Journal of Social
Economy and
Common Welfare

Z'GuG

www.zgug.nomos.de

Editorial: Leonie Weigner

E-Mail: weigner@wiso.uni-koeln.de | Phone: 0172-6227743 | Fax: +49 221-470 2648

Thank you for your interest in publishing in Z'GuG!

Please note that we can only accept contributions if you comply with the following formalities.
All contributions go into the double anonymous review process.

- Author(s) (without academic title)
- Text title in German
- Abstracts in German and English; maximal length: 700 characters
- Seven to ten keywords in German and English, arranged alphabetically
- Text length (unless otherwise agreed): 35.000-40.000 characters
- Information about the author(s): Full name, job title, employer/ place of work, Adresse, E-Mail

- **Text processing:** Please send us your manuscript as a Word file and observe the following formalities:
 - o Font: Times New Roman
 - o Font size: 13 in body text, 10 in footnotes
 - o Highlighting: *Italics*
 - o Enumerations: Mirror strokes
 - o No hyphenation (automatic or manual)
 - o Do not use blank lines between paragraphs
 - o Abbreviations, such as „e.g.“ with protected spaces (Ctrl.+Shift+Spacebar).

Zeitschrift für Gemeinwirtschaft und Gemeinwohl (Z'GuG)
Journal of Social Economy and Common Welfare
Managing Editor: Prof. Dr. Frank Schulz-Nieswandt
Chair of Social Policy and Methods of Qualitative Social Research
Institute of Sociology and Social Psychology (ISS) University of Cologne
Albertus-Magnus-Platz | 50923 Cologne

- **Structure**

- Maximum of four outline levels:
 - I. Headline...
 - 1. Headline ...
 - a) Headline ...
 - aa) Headline ...
 - bb) Headline ...
- For subchapters: at least two subchapters

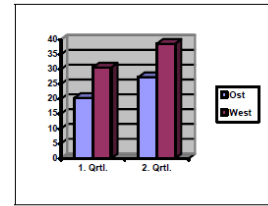


Abb. 1: Titel

Quelle: Eigene Darstellung

- **Figures and tables:**

- Please title, frame and number figures and tables in the text as shown here:
- Please send them to us additionally in a separate file

- **Citation**

- „Harvard“ Citation style: Short citation in the text (up to 60 characters) without the use of "cf.", "ibid." or similar.
 - Ex: (Schulz-Nieswandt 2007 f.); (Kurscheid 2007, S. 39 ff.).
- Two/three authors: Separation by slash; More than three authors: Mention of the first author with the addition of „et al“
 - Bsp: (Schulz-Nieswandt/Kurscheid/Wölbert 2004); (Knappe et al. 2004, S. 3)
- Multiple sources: Separation by semicolon
 - Ex: (Fritsche 2007, S. 53; Schälicke et al. 2007, S. 64); (Schulz-Nieswandt 2006; 2006a)
- Multiple contributions by one author published within one year: Starting with the second contribution, sort alphabetically by the title of the contribution and number with letters following the year
 - Ex: (Eichhorn 1999, S. 23 ff.); (Eichhorn 1999a, S. 96); (Eichhorn 1999b, S. 83 ff.)
- Laws and regulations
 - Article or paragraph, abbreviation of the law v. date of decision, place of publication in the Journal of Laws or Ordinances, last amended by law v. date of decision, place of publication in the Journal of Laws or Ordinances.
 - Ex: §1 RegG v. 27th december 1993 (BGBl. I, S. 2378), last amended by Act at 26th june 2002 (BGBl. I, S. 2264)
- Court decisions
 - Name of the adjudicating court, date of pronouncement of judgment, reference.
 - Ex: BGH, 3rd June 1998, NJW 1998, 3114 BVerfG, 12th October 1993, BVerfGE 89, 155, 209 f. EuGH, 14th May 1974, Slg. 1974, 491 Rdn. 13, NJW 1975, 518
- Comments
 - Commentary editor, edition, paragraph, annotations.
 - Ex: Palandt-Heinrichs, 57. Ed., § 127 BGB, Ann. 3 Zöller-Vollkommer, 20. Ed., § 33 ZPO, Ed. 25 Preisendanz, § 242, Ann. V. 6

Zeitschrift für Gemeinwirtschaft und Gemeinwohl (Z'GuG)

Journal of Social Economy and Common Welfare

Managing Editor: Prof. Dr. Frank Schulz-Nieswandt

Chair of Social Policy and Methods of Qualitative Social Research

Institute of Sociology and Social Psychology (ISS) University of Cologne

Albertus-Magnus-Platz | 50923 Cologne

- Internet sources
 - Last name or name of organization Year, p.; no URL address in body text/footnotes
 - Ex: Universität Köln 2007, p. 4
- **Bibliography**
 - **In general**
 - Please arrange cited literature alphabetically according to the surname of the (first) author (if no author is indicated: "w.a." = without indication of author). This does not apply to laws and ordinances, as these are not listed in the bibliography.
 - In case of multiple authors, only the first author is sorted alphabetically by last name - all other information starts with the first name.
 - Ex: Müller, Tanja, Sabine Kaiser und Ingo Meier in: ... ed. by Thomas Schmidt... (resp.: Johnson, Steve and Robert Smith ... in: .. ed. by Laura Connor)
 - If an author is cited several times, the publications are arranged chronologically.
 - Publications by the same author that appeared in the same year are listed alphabetically and labeled a, b, c from the second indication. Publications by several authors are listed under individual publications.
 - Ex: Eichhorn, Peter (1999)
 - Eichhorn, Peter (1999a)
 - Eichhorn, Peter und Thomas Meier (1999)
 - All references end with a period.
 - Several place names are separated by a long hyphen.
 - Ex.: Köln–Frankfurt
 - **Monographs**
 - Last name, first name possibly (ed.) (year), title of the book, ed. (only if it is not the first edition), place.
 - Ex: Eichhorn, Peter (2001), Öffentliche Dienstleistungen, Baden-Baden
 - **Collective work contributions**
 - Last name, first name (year), title of contribution, in: Sammelwerk, ed. by first name Last name, place, pp. XX-XX.
 - Ex: Püttner, Günter (2000), Rechtliche Vorgaben für kommunale Unternehmen: Bremse oder Wettbewerbsvorteil?, in: Kommunale Wirtschaft im Wandel - Chancen und Risiken, ed. by Peter Eichhorn, Christoph Reichard and Gunnar Schuppert, Baden-Baden, pp. 27-39.
 - **Journal articles**
 - Surname, first name (year), title of the article, in: Journal, XXth vol. XX, issue XX, pp. XX-XX (or vol. XX, no. XX, pp. XX-XX).

Zeitschrift für Gemeinwirtschaft und Gemeinwohl (Z'GuG)

Journal of Social Economy and Common Welfare

Managing Editor: Prof. Dr. Frank Schulz-Nieswandt

Chair of Social Policy and Methods of Qualitative Social Research

Institute of Sociology and Social Psychology (ISS) University of Cologne

Albertus-Magnus-Platz | 50923 Cologne

Editorial: Leonie Weigner

E-Mail: weigner@wiso.uni-koeln.de | Fax: +49 221-470 2648

- Ex: Bräunig, Dietmar und Peter Eichhorn (1995), Konzeption und Kriterien der überörtlichen Prüfung kommunaler Körperschaften in Hessen, in: Die Wirtschaftsprüfung, 48th vol., no. 1, p. 7-13 an no. 2, p. 42-50.
- **Contributions to supplements or special issues of journals**
 - Last name, first name (year), title of article, in: title of supplement, edited by, supplement no. the journal name, pp. XX-XX.
 - Ex: Eichhorn, Peter und Ernst-Jürgen Schröder, Der Förderauftrag von Sparkassen angesichts globaler Wirtschaftsentwicklung, in: Öffentliche Banken, ed. by Peter Eichhorn und Günter Püttner, Beiheft 27 der Zeitschrift für öffentliche und gemeinwirtschaftliche Unternehmen, p. 20-40.
- **Newspaper article**
 - Last name, first name of the author (year), title of the article, in: title of the newspaper, number of the issue (or date), p.X.
 - Ex: Eichhorn, Peter (2001), Öffentliche Betriebswirtschaftslehre, Public und Nonprofit Management zur wirtschaftlichen Erfüllung öffentlicher Aufgaben, in: FAZ, no. 94, p. 33.
- **Internet sources (esp. HTML and PDF documents)**
 - Last name, first name or name of the organization (year), title of the essay, URL (access: date).
 - Ex: Universität Mannheim (1998), Chair of Public & Nonprofit Management, Scientific approach to seminar and diploma theses, <http://www.bwl.unimannheim.de/Eichhorn/diplompruefung.htm> (accessed: 19.10.2007).
 - **Laws**
 - Legal standards are not included in the bibliography. "BGB" is not a source in this sense, "Palandt, Kommentar zum BGB" on the other hand is.

Zeitschrift für Gemeinwirtschaft und Gemeinwohl (Z'GuG)

Journal of Social Economy and Common Welfare

Managing Editor: Prof. Dr. Frank Schulz-Nieswandt

Chair of Social Policy and Methods of Qualitative Social Research

Institute of Sociology and Social Psychology (ISS) University of Cologne

Albertus-Magnus-Platz | 50923 Cologne